

ActSafe ACC II Ascender



DISCLAIMER

This manual is not intended, in any way, to teach an individual how to use a power ascender. It is only to be used as a reference source in conjunction with a “controlled program of instruction” in the use of this power ascender system, conducted by a qualified ActSafe Instructor.

An ActSafe Power Ascender is not a safety device. The Power Ascender is specifically designed as a tool to assist in ascending and or descending of personnel or equipment. In case of lifting and or lowering personnel the Power Ascender is always to be used in conjunction with a fully independent working back-up system.

Act Safe Systems AB makes no guarantee that the ActSafe Power Ascender will increase the user’s personal safety or free the user from possible serious injury or death or that the ActSafe Power Ascender operates as a lifesaving mechanism.

Act Safe Systems AB, our partners and subsidiaries disclaim any liability or responsibility for damages, injuries or death resulting from the use or misuse of an ActSafe Power Ascender.

The ActSafe Power Ascender should not be operated by persons who do not possess evidence of approved training in the use of the ActSafe Power Ascender, it is recommended that operators should have a rope access and/or lifting qualification depending on what applications the equipment is used for. However, even with this requirement, Act Safe Systems AB has no control over the use of this equipment and the person using this equipment assumes all risk of damage, injuries or death resulting from such use. It is expressly understood and

agreed by the buyer or any subsequent user of the ActSafe Power Ascender that Act Safe Systems AB and/or the seller in no way be deemed or held liable or accountable for any liability or responsibility for damages, injuries or death resulting from the use of the ActSafe Power Ascender, and makes no warranty, either expressed or implied, statutory, by operation of law or otherwise, beyond that expressed herein.

Act Safe Systems AB disclaims any liability in tort for damages or direct or consequential personal injuries or death resulting from a malfunction or from a defect in design, manufacturing, materials or workmanship, whether caused by negligence on the part of Act Safe Systems AB or otherwise.

By using the ActSafe Power Ascender, or allowing it to be used by others, the buyer and/or user waives any liability on the part of Act Safe Systems AB for personal injuries, death or other damages arising from such use.

Actsafes expressly disclaims liability for errors or omissions in this information and materials. This information may be subject to change without notification.

WARNING

Training and experience are required to lower the risk of serious bodily injury or death.

NEVER use this equipment unless you have read the user’s manual and completed a “controlled program of instruction” in the use of this power ascender system. However, even with this requirement, Act Safe Systems AB has no control over the use of this equipment and the person using this equipment assumes all risk of damage, injuries or death resulting from such use.

Table of contents

Disclaimer	2	USAGE	22
		Checklist before and after use	22
INTRODUCTION	4	Transportation	23
Foreword	4	Storage	23
About ActSafe	4	Connect to rope	24
About this manual	4	Ascent & descent	25
Definitions	5	Emergency descent	26
		Emergency stop	26
PRODUCT SAFETY	6	Twisted ropes, rotation	27
		Remote control	28
ASCENDER DESCRIPTION	7		
General	7	SERVICE & MAINTENANCE	30
Control panel	8	Clean the ascender	30
		Clean the battery connecting pins	30
ROPE CARE	9	Changing the primary connection sling	30
Rope recommendations	9	Remote control, changing the batteries	31
Rope check	10	Spare parts	31
		Material	31
GENERAL SAFETY MEASURES	11		
		TROUBLE SHOOTING GUIDE	32
LIFTING SYSTEMS	11		
Personnel lifting	12	WARRANTY & GUARANTEE	35
Equipment lifting	14		
Training	16	TECHNICAL DATA	36
BATTERY CARE	17	APPENDIX	37
Important information	17		
General guidelines and warnings	17		
Storage and transportation	18		
Battery disposal	18		
Connecting battery to ascender	19		
Use in high temperatures	20		
Use in low temperatures	20		
Battery indicator	20		
Charging	21		

INTRODUCTION

Foreword

Thank you for choosing a product from Act Safe Systems.

When used correctly this ascender will revolutionize the way you work on vertical work sites. This hoisting equipment makes it much more convenient for you to reach your workplace in combination with lifting materials and tools.

About ActSafe

ActSafe introduced the worlds first commercially available Power Ascender back in 1997. Today we are the world leader within this growing segment. Our innovative Power Ascender are used all over the world in industrial, rescue and military operations.

With almost two decades experience, and a worldwide distribution, we develop unique Power Ascender solutions in close collaboration with our customers. We are totally committed to our customers and do our utmost to deliver top quality products and service.

Thank you for choosing an ActSafe Power Ascender.

Visit our website for more information on ActSafe Power Ascenders. You will find important information and latest versions of manuals. www.actsafe.se

About this manual

The information in this manual cannot replace training and exercise. The ascender must only be used by personnel who have undergone proper training. Misuse may result in serious injury or death.

Description of the manual

Safety messages of extra importance are presented with the words danger and caution. The meanings of the signal words are:



CAUTION

Not following these instructions may result in **INJURY** or damage to property.



DANGER

Not following these instructions may result in **SERIOUS INJURY** or **DEATH**.



RECOMMENDATION

User recommendation is described like this.

Further information about consequences and other details is presented like this.

NOTE!

The word "Note" will precede important information about the equipment used together with the ascender.

Definitions

WORD	DESCRIPTION
Anchor	Attachment point for rope or ascender.
Ascending	Moving up on the rope.
Descending	Moving down on the rope.
Primary rope	Primary rope used with ascender. Approved according to EN1891 A.
Secondary rope	Secondary rope that takes load if failure with primary rope. Approved according to EN1891 A.
Back-up	Device that stops a fall and limits the load. Approved according to EN12841-A.
Active / Live rope	Rope that is loaded during work.
Passive / Dead rope	Unloaded rope during work.
User / Operator	Operator of the ascender, either by speed control handle or by remote control. There can be two or more at the same time.
Competent person	Personnel with adequate training and certification for the assignment.
Factor 1 fall	A fall of distance x m with x m of rope catching the fall. Fall factor is fallen distance divided by length of rope catching it.
Descender	Device for descending a rope. Approved according EN 12841 C.
SWL	Safe Working Load. The maximum load (as certified by a competent person) that an item of lifting equipment may raise, lower or suspend under particular service conditions.
WLL	Working Load Limit. The maximum load that an item of lifting equipment is designed to raise, lower or suspend.
Safety Factor	The safety factor of equipment is the ratio between the breaking strength and the safe working load.

PRODUCT SAFETY

Users of this product must have been certified or have undergone proper approved training either by ActSafe Systems or by ActSafe approved distributors.



DANGER

Read this page carefully and make sure you understand its contents.

Ascender safety

The ascender must not be used in any of the following circumstances:

- For any use other than that for which it has been designed.
- In an explosive environment.
- If modified in any way by anyone other than ActSafe Systems.
- After a free fall from any height greater than 1m onto a hard surface.
- If subjected to a dynamic load – it is designed to work in static systems only.
- If subjected to mis-use in any way as parts or components may have been damaged.
- With any charger other than the original ActSafe battery charger as supplied.
- In combination with damaged or modified battery charger.
- With any batteries not manufactured by ActSafe.

Use only original spare parts or materials recommended by ActSafe Systems.

Other battery chargers may damage the battery and may cause development of toxic gases or in worst-case scenarios cause an explosion.

If unclear of the condition of the ascender, it must be inspected and approved by ActSafe Systems or an ActSafe approved distributor before use.

The ActSafe Ascender and its equipment must be checked before and after every use and must be subject to at least one inspection per year (national regulations may require more frequent inspections).

SYSTEM DESCRIPTION



NO	PART
1	Rope grab system
2	Lifting handle
3	Control Panel
4	Pocket for Emergency Descender handle
5	Speed control handle
6	Emergency stop
7	Primary connection (8+9)

NO	PART
8	Sling
9	Attachment karabiner
10	Chassis
11	Secondary Connection point
12	Battery Connector (hidden)
13	Battery pouch



NO	PART
1	Rope guide
2	Knife
3	Rope cover
4	Rope grab

General

This ascender has been designed for lifting/ lowering a person or load in a static rope system.

The karabiner, or shackle, in the primary connection can be replaced by any other karabiner approved by Actsafe. The sling in the chassis cannot be replaced, by anything other than an original spare part from ActSafe Systems.

Control panel

All buttons are equipped with LEDs that indicate the travel mode that is active.



NO	PART
1	Battery indicator
2	Power button
3	Ascend button
4	Descend button

Machine rating label

The ascender is supplied with a machine rating label attached to the outer body. This must not be removed.



ROPE CARE



Rope recommendations

Rope recommendations for the ACCII are dependent on the type of application. For equipment-lifting operations, ActSafe specifies the use of its Equipment Lifting Rope (ELR), which is the only rope that is explicitly approved under the machinery directive for use with the ACCII ascender for this purpose.

The approval for personal lifting applications is done in combination with EN1891 A ropes. Ropes should be of solid construction with a diameter of preferably 11 mm for optimal lifting performance, 10.5 mm is allowed for use under current certification. Ropes that are too soft (EN1891 A) have a tendency to deform and/or elongate under high load and this will lead to reduced grip and eventually slipping on the ACCII ascender. In rare cases this may lead to the rope becoming stuck or jammed in the rope grab.

It is recommended that only pre-soaked ropes are used with an ActSafe ascender. New ropes should be put in cold water (<40°C) for 24 hours. This will make ropes more suitable for using in ActSafe ascenders for two reasons:

Rope density

Pre-soaking makes the ropes more dense. The fibres will absorb the water and will have the tendency to shrink when drying. The result is that all fibres become more densely aligned, the sheath sits tighter around core of rope, this will make the rope more solid and will consequently result in less mantle slippage.

Oil dissolution

For a smoother production process some oil is added to the rope reduce friction between its fibres and the rope weaving machinery. When soaking the rope in cold water some surface oil will dissolve. This will contribute further to a better grip. Do not soak ropes in warm water, this will lead to greater dissolution of oil, which will have a negative impact on rope fibres.

ActSafe distributors will help you by recommending the correct rope for the specific applications.

DANGER

Always make sure that the rope is in good condition (see page 11).

RECOMMENDATION

The user should carry out tests with the rope normally used prior to operations involving the ascender. Consult ActSafe for more information and assistance in the test of the rope.

A new rope will get an increased service life if it is put to soak in cold water before the first use.

Avoid getting sand or dirt onto/into the ropes since it will wear the rope grab and loop. Use a rope mat, rope bag or similar.

ROPE CHECK – DISCARD CRITERIA

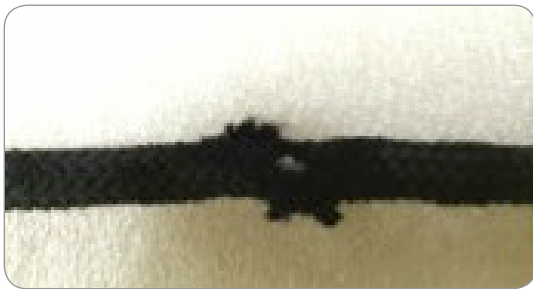
This guide is only valid for ActSafe marked rope used for equipment lifting with ActSafe ACC. The rope may not be used for other equipment lifting operations.

Markings

Should be present and easily readable and have a clearly visible WLL marking.

Damage

- The rope must not be exposed to excessive heat. Look for damage caused by a flame or sparks (obvious melting spots) or by gradual melting due to frictional heat (Hardened or melted core fibres).
- There should be no cuts or damage in the sheath fibres of the rope that change the properties of the mantle.



Sheath fibre damage

- No deformations of rope allowed, the rope should be of a constant thickness and density. Tolerances of new rope are min.10,6 mm and 11,1mm. The maximum allowed diameter for a used rope is 11,3 mm.

- No contamination of oil, solvents, acids, alkaloids or any other aggressive chemicals.
 - Ropes are not allowed to be greasy or oily.
 - Ropes are not allowed to be in contact with solvents, acids, alkaloids or any other aggressive chemicals that can change the properties of the rope.
- No changes in the color of the sheath (mantle) of the rope. This can be an indication of:
 - Contamination with chemicals etc..
 - Excessive exposure to UV light.

Rope wear



1. Sheath still in very good condition
OK to use.



2. Sheath becomes a little rugged in normal wear, still OK to use.



3. Sheath becomes very rugged – not smooth anymore.
Not OK for use.



4. White core fibres visible, not OK for use.

GENERAL SAFETY MEASURES

- Plan and evaluate your work carefully, a rescue plan should be in place.
- Only trained and competent operators should operate the ACCII ascender and its ancillary equipment
- Plan for appropriate supervision of work
- Perform a toolbox talk before starting the work
- Operate ascender according to pre-planned work instructions (lift plan, access plan)
- Use only approved and inspected equipment, this goes for both PPE and Lifting equipment.
- Inspection of equipment must be carried out in accordance with local regulations, and the ascender should be checked at least once every year.
- Pre-use check shall be done in accordance of provided inspection guidance.



RECOMMENDATION

- The area of risk under someone working at height is within a radius of 2/3 of the height and larger due to strong wind. Other persons must keep away from the area of risk.
- Always secure tools and equipment.

Basic operating guidelines

- The user shall lift the load from the ground with the minimum speed available until the rope is fully stretched.
- It is forbidden to lift loads above the rated capacity;
- Do not try to lift fixed or obstructed loads;
- Do not side-pull loads;
- Excessive inching (e.g. giving short pulses to the motor) shall be avoided;

LIFTING SYSTEMS

The ACCII ascender is approved under the machinery directive 2006/42/EC and is designed for lifting both people and equipment with a safe working load of

200 KG and a maximum lifting capacity of 250 KG. Both applications have different system requirements that will be described in separate sections in the following pages.

LIFTING SYSTEMS – PERSONNEL

The ACCII Ascender must be used with equipment as described under the PPE directive 89/686/EC and in accordance with local regulations according to work at height, rope access and rope rescue, when used to lift personnel.

Basic requirements:

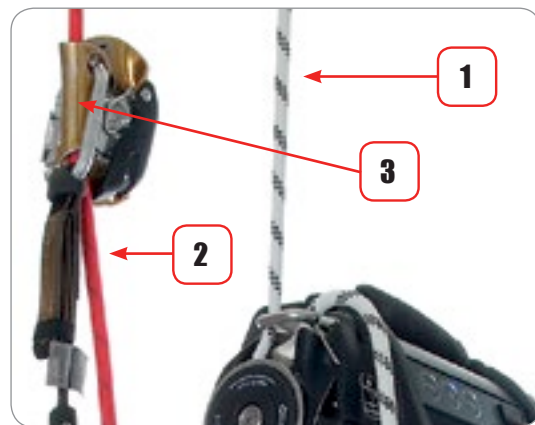
- Use only approved and inspected equipment, see Pre-use Inspection Card (see right) for further details
- Trained and competent operators
- Supervision on site
- Always use back-up system when being suspended in ropes

The rope system must consist of a primary rope (1) and a secondary back-up rope (2). Both must be approved according to EN1891 A and have a diameter of 10-13mm.

The two ropes must have separate anchor points that must hold at least 12 kN each. A competent person shall judge if the separate anchor points are sufficient. National regulations may require more.

The ACC ascends or descends on the primary rope. If any part of the load carrying system should break then the load is immediately transferred to the secondary rope which, together with the fall arrester (3) according to EN12841 A, provides a back-up system.

Do not descend on a twisted rope. It may result in a rope jam or in the worst-case scenario the rope being forced off the rope grab.



RECOMMENDATION

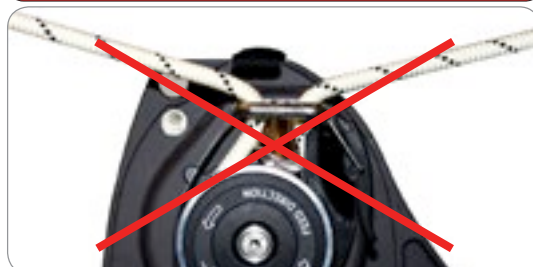
Due to the nature of working with ActSafe winches operatives are hanging for prolonged periods in a harness; we recommend the use of a work seat when hanging for prolonged periods.



DANGER

Do not use the Ascender without a back-up system. Note, when lifting two people use appropriate back-up systems

The dead rope must be unloaded. Do not build cableways using the primary rope as shown in the picture.



Personal safety

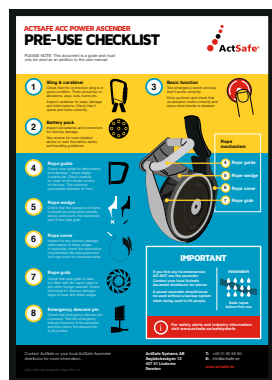
The user must wear a combination harness (1,2) approved according to EN813: 2008 (low attachment point for the primary rope, 3) as well as EN361 (high attachment point for the secondary rope or fall arrester, 4).

Do not use the ascender if you are tired, ill or under the influence of alcohol, drugs or medication.



Pre-use inspection card

A reference card is included with the ACCII ascender as a guide to the required pre-use checks.



Before use make sure that you

- Check all components in the system.
- Use appropriate PPE (Personal Protective Equipment, for example helmet, gloves and protective eye wear, 5).
- Use appropriate clothes without loose hanging parts.
- If necessary bind long hair and beards to keep the shoulder region free.

When using make sure that you

- Pay attention and use common sense.
- Do not hold the rope just above the winch; there is a risk of being pinched.
- Keep your hands and feet off rotating parts.
- Avoid pendulum movement when starting to ascend.

LIFTING SYSTEMS – EQUIPMENT

The ACCII Power Ascender in combination with ActSafe Lifting Rope is under the machinery directive approved as an equipment lifting system with a safe working load of 200 KG.

Ancillary equipment used in lifting operations must comply with local lifting regulations, e.g. karabiners can be exchanged for shackles.



General lifting recommendations

- Evaluate the work which needs to be done and plan it properly
- Make a risk assessment (load limits of the system and its components should be considered in particular)
- Make an emergency plan
- Make a lift plan for the lifting which needs to be done
- All ascender operators should be trained by competent, ActSafe-approved trainers
- All personnel should have appropriate PPE (Fall Arrest equipment is almost always needed)
- Use only system-approved components in the setup
- Perform lifting operation according to plan
- Perform a pre-use check of the ascender and its ancillary equipment as per the instructions on the Pre-use inspection card for Equipment lifting (see right).



RECOMMENDATION

Use ideally 3 people for lifting operations: An ascender operator that controls the ascenders and the rope, a slinger to connect loads and a lifting supervisor who has at all times a clear view of the load. Communication and teamwork are necessary for safe operation of the lifting system, especially between operator and handler.

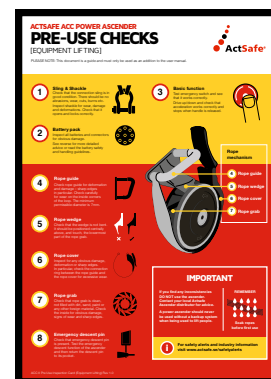


DANGER

When the Ascender set-up has been configured for equipment lifting – it **MUST NOT** be used for transporting personnel.

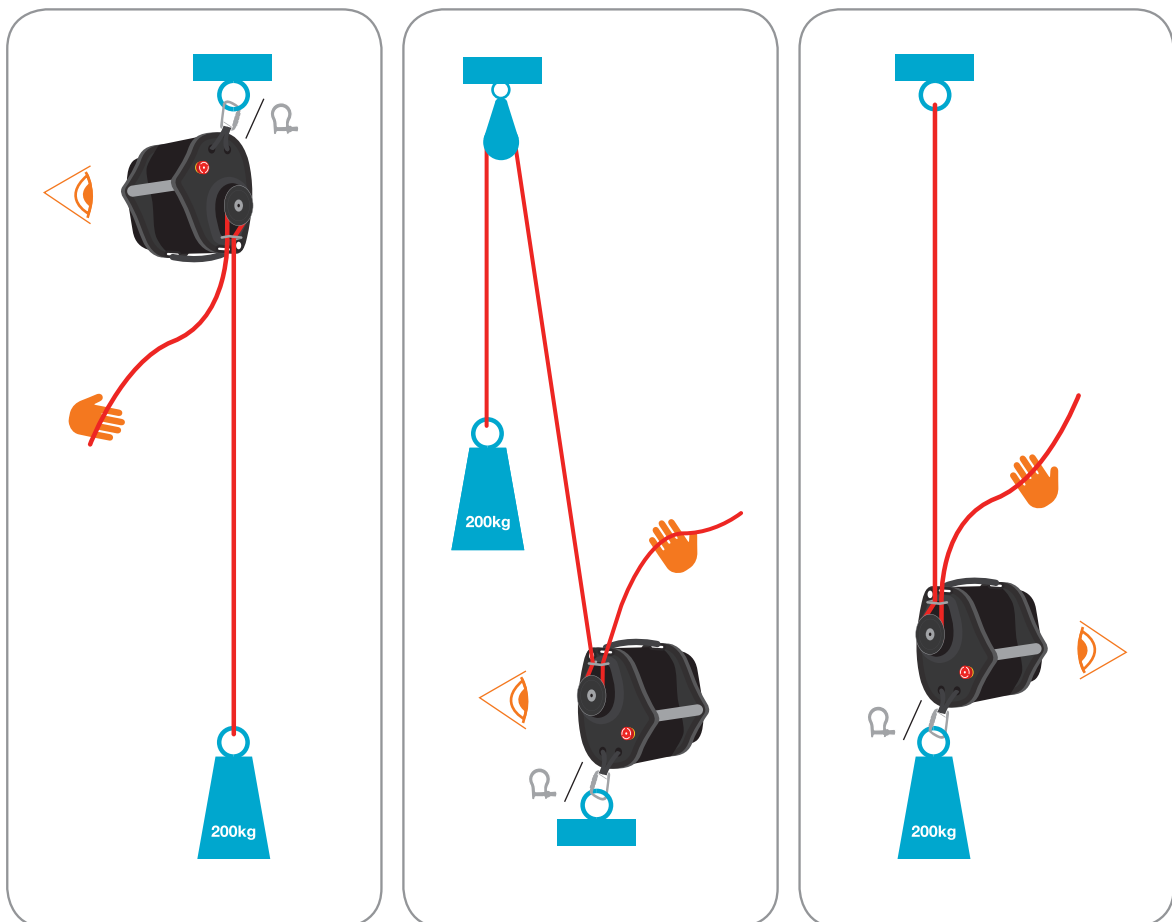
Pre-use inspection card

A reference card is included with the ACCII ascender as a guide to the required pre-use checks for Equipment Lifting.



Equipment lifting set-ups

Anchor points for equipment lifting: Anchor points used for ACCII lifting setups should have a minimum safe working load of 500 KG, the safety factor of the anchor point should meet local requirements but should be at least a factor 4 for structural parts.



Passive – Recommended

Deviated – Recommended

Active – Approved

The rope must always be guided under the full attention of a rope handler, to avoid any obstruction of the loose rope when it is drawn into the ascender when lowering a load. Rope obstruction can cause rope damage. Organize your rope management to avoid any problems with ropes.



RECOMMENDATION

Use at least 3 people for lifting operations: An ascender operator, a rope handler and a slinger to connect loads. Communication and teamwork is necessary for safe operation of the lifting system, especially between operator and handler.



CAUTION

Make sure that during lifting and lowering, the rope is guided properly in and out of the ascender, this to avoid the rope becoming blocked when going in the ascender.

TRAINING

Users of this product must have undergone proper approved training either by ActSafe Systems or by ActSafe approved distributors.

The ActSafe ACC ascender makes it possible to access heights and depths in a very quick, safe and reliable way.

The ascenders are very easy to implement within various work methods and is invaluable in places where access is difficult or impossible by other means. Because of the variety of use in different areas and

circumstances training is essential.

Working at height or in locations presenting difficult or confined access requires great skill and such standards can only be achieved as a result of extensive training and regular refresher courses.

ActSafe offers winch specific user training for different competence levels as show below. Please consult with your local ActSafe distributor for further information.

ACTSAFE BASIC+ WINCH TRAINING

Duration: 1 Day

Experience: Trainees should have as minimum requirement a good level of competence and training in work at height

This training is designed for operatives who need good basic understanding for a specific on the job application of the winch.

ACTSAFE ADVANCED WINCH ACCESS TRAINING

Duration: 2 day training

Experience: Trainee should have a rope access level.

This training is designed for rope access operatives to give them a thorough understanding how to use the winch in an rope access environment; general and job specific. Winch access!

ACTSAFE ADVANCED WINCH RESCUE TRAINING

Duration: 2 day training

Experience: Trainee should have a rope rescue background.

This training is designed for rope rescue professionals to learn about rescue capabilities of the winch. This training provides general and job specific knowledge. Winch Rescue!

ACTSAFE E LIFTING OPERATOR TRAINING

Duration: 4 hours training

Experience: Trainee should have all necessary training for personal safety and has basic training in lifting operations.

This training is intended for specialist workers who use the ACCII as their everyday lifting tool in challenging environments.

BATTERY CARE

Important battery safety and handling information!

ActSafe Power Ascender batteries are extremely powerful but at the same time compact and lightweight. The batteries use high performance lithium-based battery technology that delivers very high power and energy density. Charged and used correctly your ActSafe Power Ascender battery will give you a high level of performance throughout its service life.

However, lithium-based battery technology is still in development. To minimize the associated risks our batteries have a custom designed Battery Management System (BMS). This BMS reduces risks considerably, but cannot totally eliminate all risks. The BMS itself could break down or a battery cell might have an internal weakness not detectable during the manufacturing process. It is not possible to design a totally failsafe BMS.

Please read and understand these safety instructions and warnings before using or charging your ActSafe Power Ascender battery. By purchasing an ActSafe battery, the buyer assumes all responsibility for all risks associated with lithium-based battery technology. Product warranty is limited to original defects in material and workmanship. Warranty does not cover collateral damage.

Failure to read and follow the instructions below may result in fire, personal injury and damage to property if the battery is charged / used improperly.

General guidelines and warnings

- Disconnect the battery from the ascender when not in use.
- Always charge the battery as soon as possible after use.
- Disconnect the battery from the charger after charging.
- The battery may explode resulting in fire if misused or if the battery is defective. All users of the ActSafe Power Ascenders and associated batteries must be professionals who can handle an emergency situation.
- A severe failure during charging of the battery may result in fire or explosion. Unattended charging must be conducted in a safe and isolated area away from combustible or other flammable materials and where any potential damage is minimized.
- An old or spent battery, or a battery showing poor performance, must be taken out of service and replaced with a new one. A Power Ascender is a demanding battery application. This contributes to a relatively short service life for the battery.
 - Replace the battery in accordance with the expiry date label¹.
 - Replace the battery when less than 80 % of the initial capacity remains.
- Immediately remove the battery from service:
 - If there is visible damage to the housing, cables or the connector, including the battery connector on the power ascender.
 - If the battery has been dropped. The battery may have received internal damage that cannot be detected from the exterior.

- Allow the battery to cool down to ambient temperature before charging.
- Only use the original ActSafe battery charger.
- Do not short circuit the battery. This can cause fire. If a short circuit occurs and contact is made with metal (for example with rings on your hand), severe injuries may occur due to the conductivity of electric current.
- Do not disassemble or modify the battery. The battery contains safety and protection devices, which, if damaged, may cause the battery to generate heat, explode or ignite.
- Immediately discontinue use of the battery if, while using, charging or storing the battery, the battery emits an unusual smell, feels hot, changes shape, or appears abnormal in any other way. Since a delayed chemical reaction can occur, it is best to observe the battery for at least 15 minutes as a safety precaution. Observation should occur in a safe area outside of any building or vehicle and away from any combustible material.
- Do not expose the battery to water or salt water, or allow the battery to get wet.
- Do not overcharge the battery. Overcharging may occur during descending with a fully charged battery. Descending should be done with a partially charged battery.

1) Batteries produced after June 2013 are marked with an expiry date label. Batteries purchased before this date, without an expiry date label, should be taken out of service after 24 months at the latest from the date of purchase from the ActSafe distributor.

Storage and transportation

- All lithium-ion batteries degenerate over time, they age, even if they are properly stored.
- Store the battery with 100 % charge.
- Storing an empty battery or a battery with low charge level will drain the battery and damage it irreversibly.
- Recharge the battery every third month if stored for an extended period of time.
- Store the battery at room temperature 5 to 25 degrees C (40 to 80 degrees F). Storing at higher temperatures will result in a loss of performance and a shortened life expectancy.
- Storing the battery at a higher temperature can cause irreversible damage. Storing the battery at temperatures higher than 60 degrees C (140 degrees F) for extended periods of time may cause damage to the battery and possible fire.
- The battery is a fully regulated as Dangerous Goods (Class 9 UN3480 Lithium Ion Batteries) and must be handled and shipped accordingly.
- A defective battery must not be shipped.

Battery Disposal

- Do not incinerate or dispose the battery. Return end-of-life battery to your nearest recycling center as per the appropriate regulations.

Connecting the battery to the ascender

1. Align the slit of the battery connector with the tap of the male connector placed inside the bag of the ascender.
2. Rotate the ring of the connector all the way to the stop position in order to lock the connector in place. There might be a small spark when connecting the battery, this is normal.



RECOMMENDATION

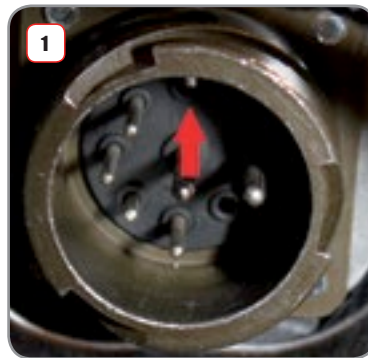
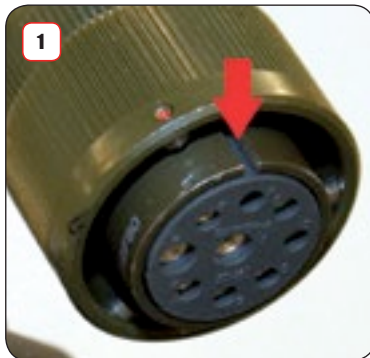
ActSafe recommends having at least one extra battery when working in order to avoid undesired breaks as a result of a flat battery.



RECOMMENDATION

When used in cold environments maintain the battery temperature by keeping the battery in the transportation box as long as possible. This will prolong the time before performance is limited.

When using the ascender with a cold battery, be aware that the initial lift speed capacity will be limited. It is only possible to ascend at lower speeds before the battery warms up and normal performance can be expected.



Use in high temperatures

The capacity is less affected by high battery temperature. The lifted height will be slightly decreased. The ascender is well designed to do its work in the full temperature range. The risk of over heating is very small.

Use in low temperatures

The capacity of the battery depends on the battery temperature. Extreme temperatures will affect the capacity, most noticeably in cold temperatures.

When the battery is cold it can behave as if the charge level is low. This may cause the battery indicator to show the wrong level. The indicator will return to normal after next recharge.

Battery indicator

The battery indicator has 4 LEDs each representing 25% charge.

When connecting a fully charged battery to the ACC all LEDs of the indicator will be activated, i.e. indicating a full battery.

The battery indicator only functions correctly if a fully charged battery is connected. If a battery with less than full charge is connected the indicator will show the last known value, i.e. the indicator will show an incorrect value.

LEDs	BATTERY CAPACITY
1 red 3 green	75-100%
1 red 2 green	50-75%
1 red 1 green	25-50%
1 red	0-25%



Charging



The battery can be charged whether its only used a little or if almost empty, no so called "memory effect" will occur.

The charger is not capable of measuring the charging level; hence it cannot determine when the battery is fully charged. For this reason the charger is timer controlled. The charging process consists of the cycle described below:

1. Connect the charger to main supply.
2. Connect the battery to the charger.
3. Constant current charging (fast charging). During this cycle the LED on the charger is red. This phase takes approximately 1 hour and 15 minutes. After this cycle is finished the battery is charged to 80%.
4. Constant voltage charging (slow charging). During this phase the led on the charger is yellow. After approximately 3 hours and 30 minutes after the charging started the battery has 100% charge, however the charging cycle continues as the cells in the battery sometimes need to be balanced.
5. After 5 hours and 15 minutes the charging cycle is complete and the led on the charger is green. Float charging mode will start automatically.
6. Disconnect the battery from the charger as it will slowly be drained if it remains connected to the charger.
7. Disconnect the charger from main supply.



RECOMMENDATION

The total charging cycle is all together around 5 hrs. The battery is however fully charged already after 3,5 hrs. The battery may therefore be disconnected after 3,5 hrs, there is no need to wait until the LED shows GREEN.

Use the transportation box to extend the service life of the ascender.



CAUTION

Failure to disconnect the charger from the battery when the charger is disconnected from the mains supply will slowly drain the battery to a level where charging is no more possible.



DANGER

If the main supply is interrupted several times during the second cycle (and the 4 hrs timer reset) there is a risk of over charging, i.e. a risk of damaging the battery.

Battery care card

A reference card is included with the ACCII ascender as a quick reference guide for the battery.




USAGE

Checklist before and after use


The user must make sure that the ascender is in full working order and the pre-use check have been made before each use of the ascender. If in doubt do not use the ascender and consult ActSafe or an approved distributor.

Check the ascender and its components for loose parts, excessive wear and damage. Damage includes cracks, marks and/or abnormal wear indicating the product has been subject to excessive force or impact energy.


1 Sling & carabiner
 Check that the connection sling is in good condition. There should be no abrasions, wear, cuts, burns etc. Inspect carabiner for wear, damage and deformations. Check that it opens and locks correctly.




6 Rope cover
 Inspect for any obvious damage, deformation or sharp edges. In particular, check the connection ring between the rope guide and the rope cover for excessive wear.




2 Battery pack
 Inspect all batteries and connectors for obvious damage. See reverse for more detailed advice or read the battery safety and handling guidelines.




7 Rope grab
 Check that rope grab is clean, not filled with dirt, sand, paint or any other foreign material. Check the inside for obvious damage, signs of wear and sharp edges.




3 Basic function
 Test emergency switch and see that it works correctly. Drive up/down and check that acceleration works correctly and stops when handle is released.



8 Emergency descent pin
 Check that emergency descent pin is present. Test the emergency descent function of the ascender and then return the descent pin to its pocket.




4 Rope guide
 Check rope guide for deformation and damage – sharp edges in particular. Check carefully for wear on the inside corners of the loop. The minimum permissible diameter is 7mm.



CAUTION
 Ensure that:
 The battery charge level is sufficient for the assignment.
 Annual inspection performed according to ActSafe's recommendations as well as national regulations.

5 Rope wedge
 Check that the wedge is not bent. It should be positioned centrally above, and touch, the lowermost part of the rope grab.



DANGER
 If the rope guide is less than 7mm thick, it must be replaced.

Transportation

For short transports, carry the ascender by the lifting handle.

During normal transport the transportation box is optimal as it protects the ascender from damage.

Always make sure the Ascender is secured before being transported in a vehicle.

The batteries contains more than 100 Wh and therefore considered dangerous goods. Make sure they are transported in accordance with local rules and regulations.

Storage

Always clean and dry the ascender and the transportation box before putting it away for storage.

Store the ascender and the remote in a cool and dry place. It can be stored in the transportation box, make sure it is dry.

CAUTION

Always store the battery fully charged.

Never store the battery connected to the ascender.

Never store the battery connected to the charger.

If stored for long periods, charge the battery once every three months.

Connect to rope

This procedure should be carried out with the ascender placed on the ground.



1. Open the rope cover and form a loop with the lifting rope



2. Push the loop through the rope guide



3. Put the rope around the rope grab



4. Close the rope cover.

Check that the live rope exits to the left and that the rope cover is fully closed.

Attaching the rope incorrectly can result in serious injury or death.

Always use the ascender with a secondary rope system.



RECOMMENDATION

Drive the ascender to waist level to simplify connection to harness.



DANGER

Make sure that the rope is attached correctly before use.



CAUTION

Always push the emergency stop before loading the rope to avoid accidental activation by the remote control while loading the rope.

Ascent & descent

1. Switch the ascender on.
2. Choose travel direction up/down.
3. Turn the speed control towards you to increase the speed.
4. Feed away the dead rope gently during the first few meters of ascent. After approx 5 meters the weight of the rope will be sufficient to “clean” itself from the ascender.
5. Stop the motion by turning the handle away from you or letting it go.

Always make sure that the rope feeds smoothly. During ascent make sure the outgoing rope is not blocked in any way. During descent make sure no twists pass the rope guide.



DANGER

Should the rope cover open at any point during ascent or descent, stop immediately and close it again before continuing.

CAUTION

Do not hold the rope just above the winch, there is a risk of being pinched.

Never start descending with a fully charged battery as it can cause overcharging and damage the battery.

RECOMMENDATION

Stand straight beneath the anchor point in order to avoid a pendulum movement when starting off the ground.

Adjust the speed according to the circumstances, be aware and use common sense.

If balance is needed, hold on to the primary connection sling or karabiner.

If you know that your work will start “top down” then start with a partial charge depending on distance. As a rule of thumb each LED on the ACC equals 50 meters with 120 kg load.

It is always safe to descend the same distance as you have ascended on the same battery.

Emergency descent

Whenever the ascender is not running the mechanical brake is activated. This brake can be controlled manually to allow an emergency descent. The function should be treated as a normal descending device.

Only use in case of emergency, normal descending shall be used whenever possible. The battery is charged during normal descent as well so you don't save any battery capacity by using emergency descent.

1. Place a hand on the dead rope.
2. Descend by gently pressing the handle to the side.

Stop the descent by letting go of the descend handle.



DANGER

Emergency descending results in uncontrolled charging of the battery which may damage the battery. The risk is increased with a fully charged battery. Descend slowly to reduce the risk of battery damage.

CAUTION

Do not use the emergency descender over very long distances.

RECOMMENDATION

In most cases the emergency descent is not needed as the ascender can be restarted to allow normal descent with the motor.

Adjust the speed according to the circumstances, be aware and use common sense. *)

*) Descent slowly and safely.

Emergency stop

1. Press the emergency stop to immediately turn the ascender off.
2. Reset the emergency stop by twisting it clockwise.

CAUTION

The remote control doesn't work when the emergency stop is activated.



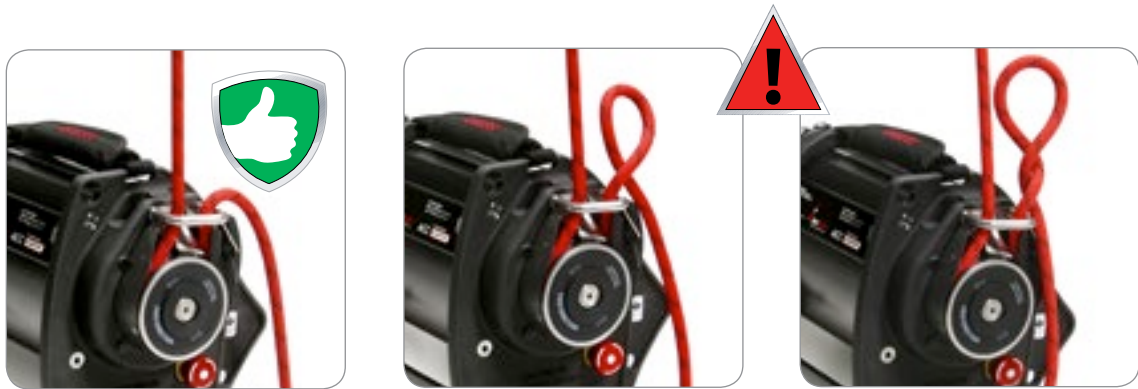
Twisted ropes, rotation

Badly twisted ropes, e.g. as a result of the operator rotating/spinning during ascent/descent may be dangerous and should be avoided.

In the unlikely event that the rope gets stuck in the ascender, stop lifting operations immediately and find out the cause.

When lifting people, secure the back-up device in safe position. If possible try to run carefully the ascender in opposite direction. If this is not possible do secure the load by tying of the loose rope and try to setup a new rope system.

Do not put your fingers near the load bearing parts of the ascender in case of a rope-jam with a loaded rope.



! DANGER

When descending, make sure the rope goes cleanly in to the rope grab, i.e. that there are no curls or similar on the rope.

This is extra important when working with the ascender fixed next to the rope bag or pile of rope so that unloaded rope is constantly fed to the ascender. Guide the rope with your hand to make sure no twists pass to the rope guide.

Remote control

The remote is primary a rescue tool, allowing another person to move the operator up or down in case of an emergency. However, the possibilities when using the remote in other applications are numerous. Such application shall be trained in a safe environment, and as always a back-up system shall be used.

The remote control allows the ascender to be operated from a distance. The remote control will override the control buttons on the ascender, i.e. when the remote is switched on it will not be possible to operate the ascender by its own controls. If the remote is not used it will automatically switch off after 10 seconds. The ascender will need to be switched on for the remote to function. When shutdown the ascender will be in standby mode for 4 hours allowing the remote to start it.

The remote allows ascending and descending at 2 different speed alternatives; slow and fast. (25% and 75% of maximum speed respectively)



RECOMMENDATION

Be careful operating the remote if you don't have visual contact with the ascender.

Always use the remote in combination with a stop knot at each end of the rope.

The remote shall have visual contact with the ascender to ensure maximal range.

When the ascender is powered off it can be reactivated from the remote control for 4 hours.

The remote control is not watertight. The protection class is IP65 (i.e. no ingress of dust and water projected by a nozzle against enclosure from any direction shall have harmful effect).



NO	PART
1	Ascend speed button
2	Activate button
3	Descend speed button
4	Slow speed LED (red)
5	Fast speed LED (red)
6	Power LED (green)*

**) When power LED is flashing red, the battery in the remote is running low. Change the batteries in the remote.*

Several remote controls can be used with one ascender, of which only one can be active at each time. Contact ActSafe or your distributor for more information. When used with several remote controls the first one to contact the ascender will be active. To change remote, wait until the first remote automatically turns off.

The remote control holder is equipped with a full strength sling allowing it to be used to connect person or load. This sling is a part of the ascender system and cannot be used as a separate sling in other applications.

The power for the ascender must be turned on (if not recently used).

1. Press any button on the remote to activate it. (The green LED will flash 3 times before going steady if connection with ascender is successful)
2. Press the down/up button once for slow speed, twice for fast speed.
3. Press the "Activate" button to ascend/descend at selected speed and direction.



RECOMMENDATION

For personal lifting applications, when ascending via remote control (with the ascender in the anchor), attach the remote holder to the harness and connect to the upper part of the remote holder sling to get an ergonomic operating position.

The remote control hand unit only works with the Power Ascender it has been delivered with. If several Power Ascenders with remote control, hand units should be marked so it is clear which Power Ascender it belongs to.

CAUTION

For optimum range and reliable operation, ensure the remote is always in the line of sight of the ascender (no obstructions).

If you have several ascenders with remote controls, then make sure they are properly marked (e.g. color coding or numbering) to avoid potential dangers by using the wrong remote.

SERVICE & MAINTENANCE

Use only original spare parts / material recommended by ActSafe Systems.

Clean the unit regularly. Check the charging pins and karabiners for oxidation. Clean and lubricate if needed.

Clean the ascender

NOTE! Do not use running water or a high-pressure washer!

- Wipe the ascender with a wet cloth and let it dry.
- Clean the karabiner thoroughly, lubricate with thin oil.



Clean the battery connector pins

Spray the pins with an electronic connector cleaner/lubricator when needed.



RECOMMENDATION

Go through "Checklist before and after usage" at every maintenance to increase the safety for the user (/users) of the ascender.

Changing the primary connection sling

If unsure of any of these steps, contact ActSafe Systems or local distributor.

1. Use pliers to force the captive bar out.
2. Remove the karabiner and the sling.
3. Push the sling through the chassis holes. Use thin, long pliers to do this.
4. Connect the karabiner and lock it with a captive bar.



RECOMMENDATION

We recommend that you change the karabiner and the sling at the same time.

Remote control, changing the battery

1. Remove the battery cap (2 screws).
2. Replace the batteries (AA).
3. Reattach the battery cap (2 screws).



Spare parts

The most common parts are listed here, contact ActSafe Systems or your local distributor if you don't find your part here.

Rope grab	49-150-201
Cover	50-160-103
Knife	50-150-105
Rope guide	49-160-309
Sling	50-160-135
Karabiner	50-105-052

Material

Thin Oil
CRC 5-56
Loctite 243

TROUBLE SHOOTING GUIDE

If this guide does not solve your problems, contact ActSafe Systems or by ActSafe approved distributor.

No power when main switch is pressed

PROBABLE CAUSE	REMEDY
The emergency stop is activated.	Disengage the emergency stop.
The battery is flat.	Recharge the battery.

No response to speed handle

PROBABLE CAUSE	REMEDY
The ascender is not switched on.	Switch the power on.
The remote control is switched on.	Restart the ascender or wait for the remote to turn off.
The battery is flat.	Recharge the battery.

The ascender stops on ascent/descent

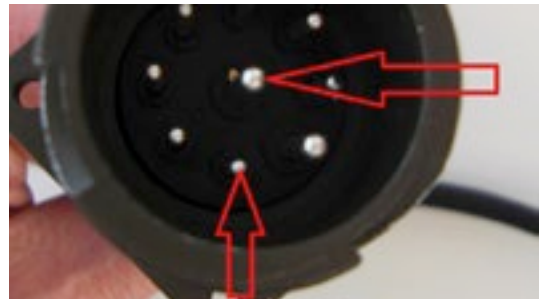
PROBABLE CAUSE	REMEDY
The ascender is overloaded.	Ensure the load is not exceeding lifting capacity and restart by return the handle to zero.
The rope is jammed.	Do not try to clear the jam under load as it can be dangerous! See "twisted ropes and rotation" page 25 for advice.
The battery is flat.	Recharge the battery.

The ascender do not start or switches off when newly recharged

PROBABLE CAUSE	REMEDY
The battery is to cold.	Warm the battery. See technical data for temperature range.
The charger fuse is burned.	Check the fuse and replace if needed. See instruction 2.
The charger is broken/damaged.	Repair/replace the charger, contact ActSafe or an approved distributor. See instruction 2.
The battery is flat.	The ascender is in need of repair and service, contact ActSafe or an approved distributor. See instruction 1.
The emergency stop is activated	Deactivate the emergency button.



1) Measure the voltage (on pins I and H as shown in the picture) of the battery with a common voltmeter. It shall be 37,2 V when the battery is fully charged.



2) Measure the voltage (on pins A and I as shown in the picture) of the charger at the battery connector with a common voltmeter, when the charger is connected to the wall socket. It shall be 39,6 V if the charger is ok.

**CAUTION**

Be careful not to short circuit any pins while measuring the voltage on the battery and the charger.

Ascender operates at very low speed

PROBABLE CAUSE	REMEDY
The battery is too cold.	Warm the battery. See technical data for temperature range.
The ascender or the battery is too warm.	Let the ascender or the battery cool down.
The ascender is overloaded.	Lighten the load.

The grab on the rope is poor, the rope slips

PROBABLE CAUSE	REMEDY
Rope connected incorrectly.	Reconnect the rope.
The rope is not suitable for the ascender.	Change the rope.
The rope grab is worn.	The ascender is in need of repair and service, contact ActSafe or an approved distributor.

The remote control cannot operate the winch when LED is green

PROBABLE CAUSE	REMEDY
The distance to the winch is too far.	Move closer to the ascender or replace the battery of the remote.
There are objects disturbing the signal.	Move closer to the ascender to get a stronger signal.
The ascender is not powered up.	Turn the ascender on.
The ascender is broken/damaged.	Check the trouble shoot guide regarding the ascender.
Wrong remote control is used.	Change to correct remote control.

The LED on the remote flashes red

PROBABLE CAUSE	REMEDY
The battery is running low.	Replace the batteries of the remote control.
The remote is corrupt.	Consult ActSafe or an approved distributor.

The ascender is very hot and there is no response to the speed handle

PROBABLE CAUSE	REMEDY
The ascender is overheated.	Wait for the ascender to cool down.

POWER ASCENDERS WARRANTY TERMS

ActSafe Systems AB ("ActSafe") guarantees the Power Ascender ("product") purchased to be free from defects resulting from the use of faulty parts or poor workmanship during its manufacture subject to terms of the limited warranty ("warranty") given below.

- The claim will have to be made within the warranty period, i.e. one year from delivery unless otherwise agreed.
- ActSafe will repair or, if necessary in ActSafe's opinion, replace any defective parts and correct any problems resulting from poor workmanship free of charge.
- ActSafe reserves the right to use reconditioned parts with performance parameters equal to those of new parts in connection with any services performed under Act Safe's limited warranty.
- The warranty does not extend to parts or products requiring replacement due to normal wear and tear, corrosion, rust, stain, etc.,
- Any service, repair or replacement not within the scope of ActSafe's coverage shall be subject to the rates and terms of the ActSafe approved service center performing such service.

Except for the warranties set fort herein,

ActSafe disclaims all other warranties, express or implied or statutory, including, but not limited to the implied warranties of merchantability or fitness for a particular purpose. Any implied warranties that may be imposed by applicable law are limited to the duration of this limited warranty. In no event shall ActSafe be liable for any incidental, special or consequential damages, consequential human injury or loss, including, but not limited to loss of business, profits or use whether in an action in contract or tort or based on a warranty arising out of or in connection with the use or performance of the product or any ActSafe supplied accessories which accompanies the product even if ActSafe has been advised of the possibility of such damages.

The customer agrees that repair or replacement, as applicable, under the warranty services described herein are the sole and exclusive remedies with respect to any breach of the ActSafe's limited warranty set forth herein.

If any provisions of this limited warranty are held to be unenforceable or illegal, the continuation of the other provisions will not be affected. This warranty will also not affect the customer's mandatory rights under applicable Swedish laws.

Claim under ActSafe's warranty

- Claim under ActSafe's warranty may be made only by those customers who have the original sales invoice.

The warranty does not apply if:

- A damage or defect has occurred due to physical breakage, electrical faults external to the product, water penetration of the product, abuse or events of force majeure.
- The product is modified, maintained or repaired by a party not authorized by ActSafe.
- The product is maintained and operated in ways other than as recommended by ActSafe.
- The serial number stickers have been removed or tampered with.
- A non-ActSafe certified product is added on to the product.

Warranty Limitations

- The warranty is not transferable from one user/customer to another.

TECHNICAL DATA

NOTE The performance is tested with an unused 11 mm, unwatered rope at room temperature.

Speed, load, characteristics of ascent/descent will affect the battery capacity; in many cases the capacity may well exceed the 200 meters on one charge.

PERFORMANCE/PART	VALUE	COMMENT
Rope	Semi Static Rope For Personal Lifting <i>EN 1891A</i> 10-13 mm and Equipment Lifting ActSafe ELR	11 mm preferred. "Rope must be watered before first use".
Max working load	250 kg	
Safe Working Load (SWL)	200 kg	
Overload limit	260-280 kg (approx)	
Ascent speed	0-22 m/min	Continuous adjustment.
Descent speed	0-25 m/min	Continuous adjustment.
Emergency descent speed	0-25 m/min	Continuous adjustment.
Battery capacity	200 m with 120 kg load	At 20°C, ascending
Charging time	3,5 h	
Temperature range	-20 °C to + 50°C	
Over heating protection	Yes	
Weight	15 kg	Excluding battery.
Dimensions	38 x 25 x 30 cm	
Remote control range	Up to 100 meters	The remote shall have visual contact with the ascender to ensure maximal range.
Dynamic load testing	1,25xSWL	
Static load testing	1,5xSWL	

APPENDIX

Declaration of conformity and EC Type test Certificate.

<p>EC DECLARATION OF CONFORMITY Machinery Directive 2006/42/EC</p>		
<p>Manufacturer: ActSafe Systems AB, Sagbäcksvägen 13, 437 31 Lindome, Sweden</p>		
<p>It is hereby is certified that the following product</p>		<p>is made according to:</p>
<p>Description, ID/mark, type: ActSafe Ascender ACC II</p>	<p>DIRECTIVE 2006/42/EC DIRECTIVE 2004/108/EC</p>	
<p>Serial Number: <input type="text"/></p>	<p>Harmonised standards:* EN 1808:1999+A1:2010 EN 14492-2:2006+A1 EN 61000-6-2:2005 EN 61000-6-3:2007</p>	
<p>Notified body if any: Danish Technological Institute</p>		
<p>Id. No.: 0396</p>		
<p>EEC-type certificate: TI-14-MD-0419</p>		
<p><small>*Relevant parts of harmonised standards</small></p>		
<p>Name Magnus Glans</p>		 <p>ActSafe Systems AB Sagbäcksvägen 13 437 31 Lindome Sweden T: +46 31 65 56 60 E: info@actsafe.se</p>
<p>Job title Managing Director</p>		
<p>Signature </p>		
<p>Place and Date Lindome 2014-09-16</p>		
		 <p>HAND-BUILT IN SWEDEN</p>

Distributor:



ActSafe Systems AB

Sagbäcksvägen 13 | SE-437 31 Lindome | Sweden

Phone +46 31 65 56 60 | Fax +46 31 65 56 69

info@actsafe.se | www.actsafe.se